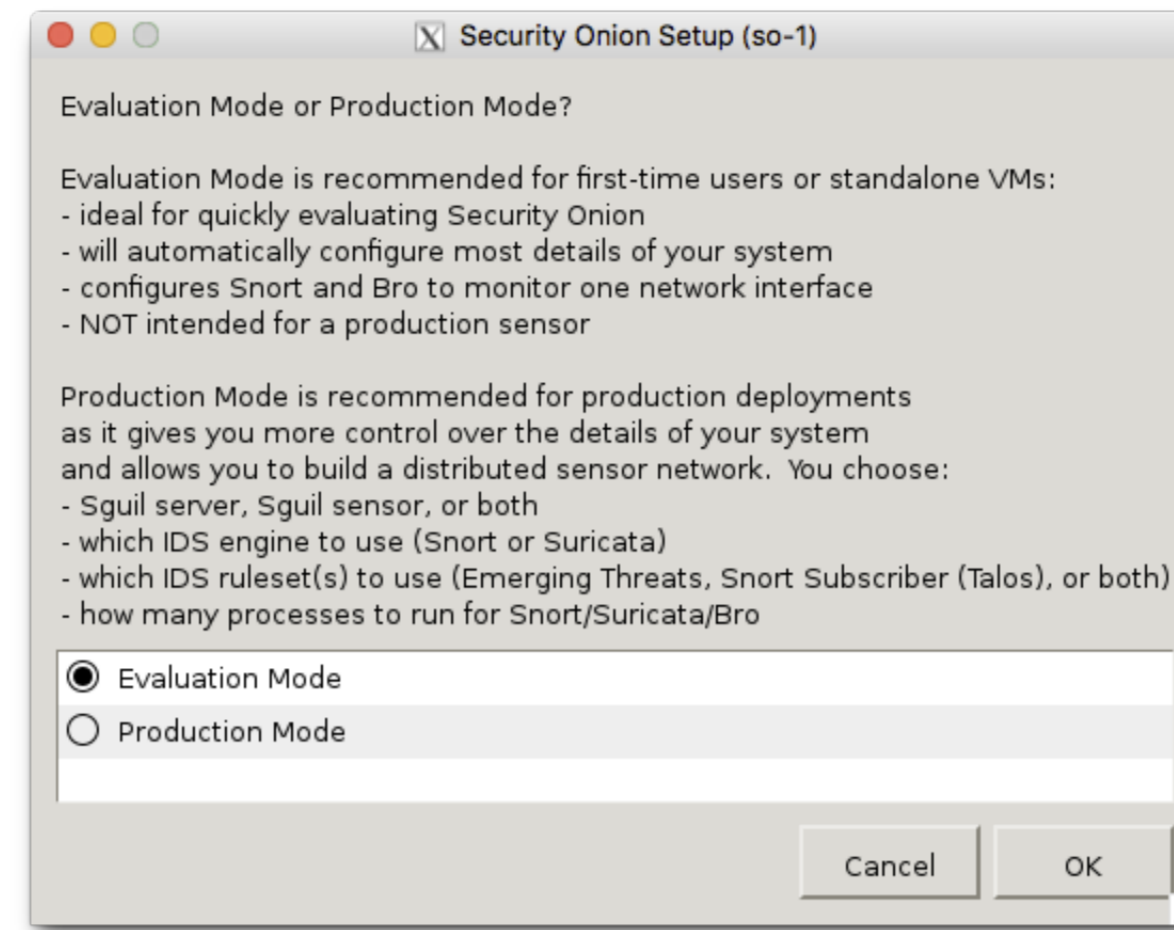




[How To Install Squl Centos](#)



[How To Install Squl Centos](#)



---

By joining your community you can send content receive the newsletter use advanced search subscribe to threads and access many other special features. This connects the logical eth x device to a particular hardware card that becomes important if you later update the kernel or launch a new network interface that can fix the cards. Finally an example of a cai is responsible for obtaining information from the PADS files and into the PADS agent and a tailored process that continuously reads the Short Performance numbers shown in the GUI.

For advanced staff desktop configuration and the basic knowledge needed to continue with system and network management.

While the management interface clearly requires an IP address and complete network setup monitoring monitors without addresses or network changes must be monitored.

The only hard part is to remember which packages are installed on any system For example only a server requires the MySQL system but only the sensors need snapshots or some of the other data processing tools. In addition to copying the boot manager in place modify it to reflect the location of MySQL binaries and use the chkconfig command to enable startup. Since you are under no circumstances with a C-compiler installed on a sensibox put them together in another RHEL3 box and copy them to your server and sensor later.

For the production of sensors with multiple elevation and warning data you will probably want everywhere from 50 GB - 0 GB of space dedicated to MySQL depending on data storage policies. If you run multiple sensors on the same machine you probably have double RAM and multiply storage capacity with a number of sensors on the system. e10e415e0f